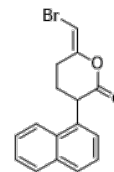


Product Name : Bromoenol Lactone
Cat. No. : PC-26700
CAS No. : 88070-98-8
Molecular Formula : C₁₆H₁₃BrO₂
Molecular Weight : 317.18
Target : Phospholipase
Solubility : 10 mM in DMSO



Biological Activity

Bromoenol Lactone (HELSS) is a potent, irreversible, selective inhibitor of calcium-independent phospholipase A2 (iPLA2, GVIA iPLA 2, iPLA2 β) inhibitor with IC₅₀ of 1 μ M.

References

Chakraborty S, et al. J Pharmacol Exp Ther. 2011 Nov;339(2):329-40.

Fensome-Green A, et al. Cell Calcium. 2007 Feb;41(2):145-53.

Caution: Product has not been fully validated for medical applications. Lab Use Only!

E-mail: tech@probechem.com